



COLLECTOR TRACTOR REDUCTION

AUCTION

LIVE & ONLINE



BIDDING OPENS: MONDAY, JULY 28, 2025 • 10:00 A.M.

Live Auction Starts Thursday, August 7, 2025 • 9:00 a.m.

Preview Dates: Saturday, August 2nd, 9:00-Noon & Sunday, August 3rd 1:00-3:00 or by appointment.

Payment & Pickup: Loading is only available day of sale – all remaining items will need to make an appointment.

Location: 5360 County Highway BC Sparta, WI 54656 • For more information and pictures: www.hmauction.com

ANTIQUE TRACTORS



- 1954 John Deere 50 Barber Greene Tractor, NF, 12.4x28" Tires, No PTO, (1) Rock Shaft, 4 Bar Steering Wheel, Made Limited Quantity, Runs, SN 5021180
- John Deere B Tractor, NF, PTO, Drive Bar, Runs, SN 165565
- 1939 John Deere B Tractor, w/Behlen Overdrive, NF, PTO, 12.4x38" Tires, Runs, SN B79313
- 1949 John Deere G Tractor, NF, PTO, 13x38" Tires, Runs, SN 38675
- 1937 John Deere A Tractor, NF, Flat Spoke Wheels, Runs, SN 458939



- 1956 John Deere 520 Tractor, NF, Power Steering, 2 Hyds., PTO, Runs, SN 5202255
- 1946 John Deere H Tractor, NF, Hyds., Electric Start, SN 54629
- 1936 John Deere Unstyled B Tractor, Front Spokes, Runs, SN 21035
- 1942 John Deere A Tractor, NF, on Steel, Flat Spokes, Free
- 1949 John Deere AHN Tractor, Parts Tractor, 42" Tires, Single Front, Non-Runner, SN 624217
- 1945 John Deere A Tractor, NF, Runs, SN 607931
- 1952 John Deere AR Tractor, PTO, Hyds., Rear Weights, Free, SN 279793



- 1940 John Deere A Tractor, NF, 4sp Electric Start, Long Hood, Free, SN 497016
- 1947 John Deere A Tractor, Parts Tractor, NF, SN 570526



- 1948 Co-op E3 Tractor, NF, Runs
- 1944 John Deere A Tractor, Parts Tractor, NF, SN 534292



- 1940 John Deere A Tractor, NF, 4sp, Side Hill Clutch, Free, SN 434463
- 1948 John Deere A Tractor, Parts Tractor, NF, SN 593525
- John Deere B Tractor, Parts Tractor, NF, SN 209985
- John Deere G Tractor, Parts Tractor, NF
- 1951 John Deere A Tractor, NF, SN 671788
- 1939 John Deere B Tractor, on Steel, hi-Low, w/Behlen Overdrive, Runs, SN 69135
- 1939 John Deere B Tractor, Rear Flat Spokes (not cut), NF, Runs, SN 79473
- 1941 John Deere B, NF, Non-Runner, SN 99970



- 1943 John Deere A Tractor, NF, 6 Sp., Free, SN 502380
- 1942 John Deere B, NF, (bad trans), SN 120276
- 1949 John Deere B Tractor, NF, Free, SN 240902
- 1944 John Deere B Tractor, NF, War Time, Free
- 1951 John Deere B Tractor, NF, SN 257713
- 1949 John Deere G Tractor, NF, Canada Export, Electric Start, Bore 125, Running, SN 36638
- 1950 John Deere A Tractor, NF, 13.6x38" Tires, Runs, SN 646353
- Ford Dextra Tractor, Non-Runner

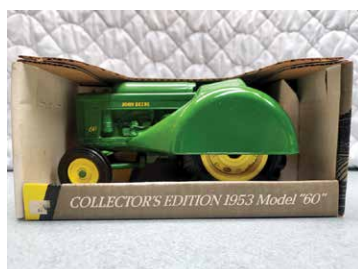
FARM TOYS & OLD LITERATURE • OVER 30 LOTS TO BE SOLD



- Collector Series, Precision Scale, (20) w/Box



- Unstyled A
- Unstyled A w/Cultivator



- 4020
- 4000



- 2 Cylinder Magazines
- Green Magazines



- Stream Show Magazines
- Tractor History Books

TRACTOR PARTS



- JD Flat Spoke Rims for JD B
- Axle 4WD Auto Co. Tires & Rims
- John Deere 45 Loader
- Ford Loader off Ford Dextra

- John Deere A Loader
- JD Flat Spokes, Cutoffs
- Assortment of Steel Wheels
- JD Steel Wheel, Bolt in Center Hubs
- JD Rim Widens, Bolt On
- JD Rims, Flat Spokes, for JD B
- JD Rim Widens
- JD Wheel Weights
- JD Fenders, Clam Shell & Round Tops
- Set Front Wheel weights for JD A

FARM EQUIPMENT

- John Deere 2600 4 Bottom Plow
- Westfield 8"x30ft Auger
- Custom Made Pull-Type Sprayer w/Boom
- Metal Forge
- John Deere – Killdeer Slip Scraper
- John Deere H Mounted Corn Planter
- John Deere H Cultivator

- John Deere H Mounted Plow
- John Deere 520 Cultivator
- John Deere Yakima Plow, Mounted, 3 Bottom, Model 200, SN 2415
- John Deere Sickle Mower
- John Deere Manure Spreader
- John Deere Drop Spreader
- JD Sickle Mower #39
- Antique Hand Tools

Terms: Cash, Check, Credit Card, 10% Buyers Premium With \$1,000 Cap, All Items Sell AS-IS, All Sales Final, All Items Must Be Paid For Prior To Removal.

SNOW MACHINE



- John Deere 600 Snowmobile, 1973-1975

Todd Huggett, Seller

SELLER'S PHONE
608-797-0954



HAMILTON-MARING AUCTION GROUP

PO Box 37, Kenyon, MN 55946
130 State HWY 16, Dexter, MN 55926
507-789-5421 or 800-801-4502

Registered WI Auctioneer: #2992-52

Matt Maring Lic# 25-28 • 507-951-8354

Kevin Maring Lic# 25-70 • 507-271-6280

Adam Engen Lic# 25-93 • 507-213-0647

Andrew Hamilton Lic# 55-051925 • 507-438-6693

Bill Hilton Lic# 50-24 507-279-9600